

ADDENDA #1

To: Prospective Entities

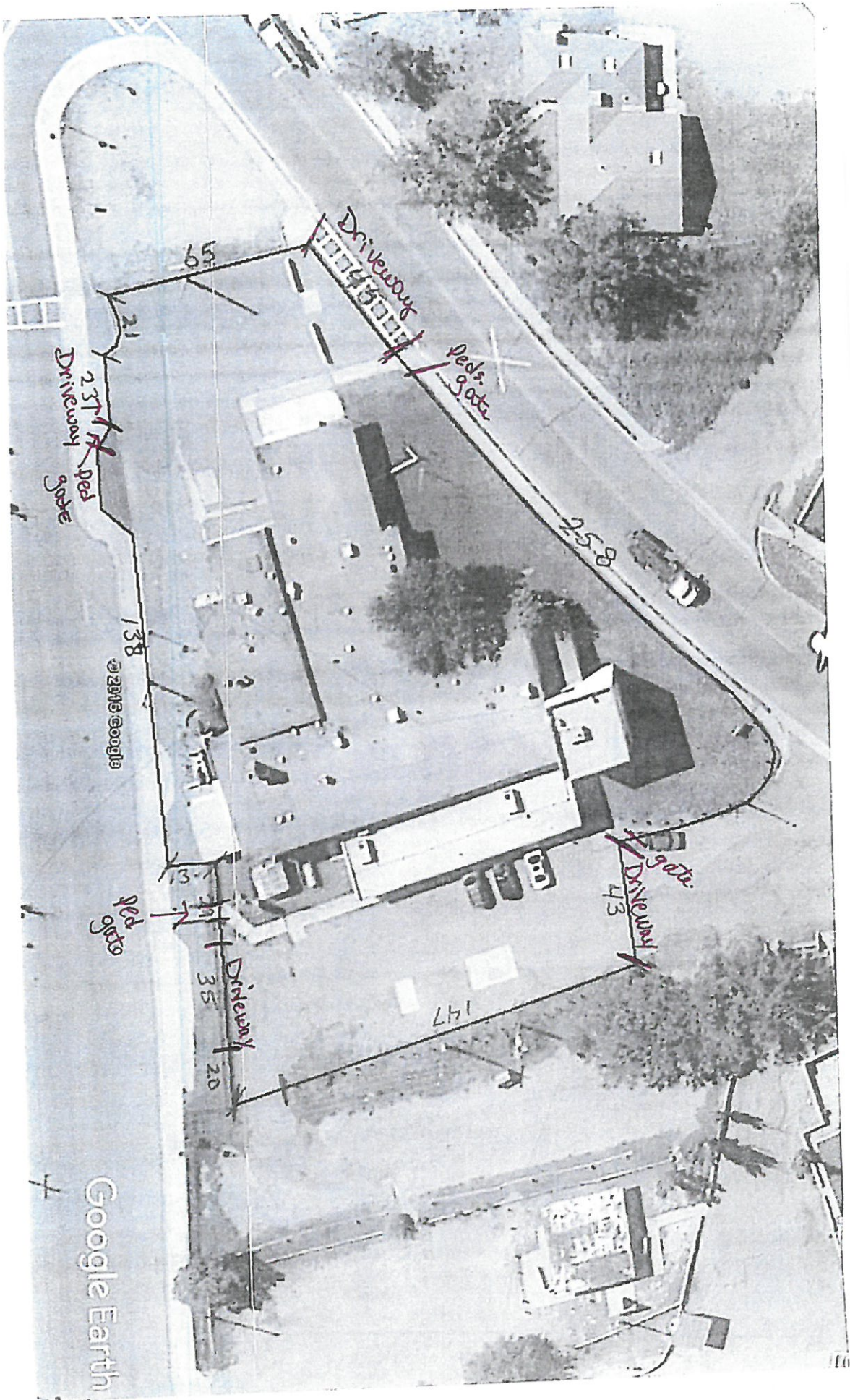
From: Monica Abeyta, Guadalupe County

Date: March 21, 2017

Re: **ADDITIONS TO IFB 2017-03 MATERIALS AND INSTALLATION OF A NEW FENCE AT THE
GUADALUPE COUNTY VETERANS COMMUNITY CENTER FOR PACKET.**

-
- 1 - Project Area with dimensions
 - 4 – 4 foot Pedestrian Gates
 - 4 – 14 foot Driveway Gates

End of addenda



Pedestrian gates 4 each @ 4ft.
 Driveways gates 4 each @ 14ft

837 ft Total

Google Earth